

Note!

Please note that there can be small differences between your product and the images in these instructions.

Note!

Please note that during storage and transport, especially at high ambient temperature, some of the oil and grease used for assembly may leak and stain the packaging. This will not cause damage to the product, wipe off the excessive oil or grease with a cloth.

Kit Contents

Description	Part No	Pcs
Shock absorber	SU 026	1
Tie wrap	00231-01	2
Screw M10x1.25	00439-02	1
Screw M8	01046-25	1
Sticker set Öhlins		1
Memo Notes Sticker	01180-01	1
Owner's Manual	07242-01	1

Note!

Before you install this product, check the kit contents. If anything is missing, please contact an Öhlins dealer.

Warning!

Before you install this product, read the Öhlins Owner's manual. This product is an important part of the vehicle and the vehicle stability.

Shock absorber for Suzuki GSX-R 1300 Hayabusa

SU 026

Mounting Instructions

MOUNTING INSTRUCTIONS

⚠ Warning!

We strongly recommend to let an Öhlins dealer install this product.

⚠ Warning!

If you work with a lifted vehicle, make sure that it is safely supported to prevent it from tipping over.

👁 Note!

When you work with this product, see the vehicle service manual for vehicle specific procedures and important data.

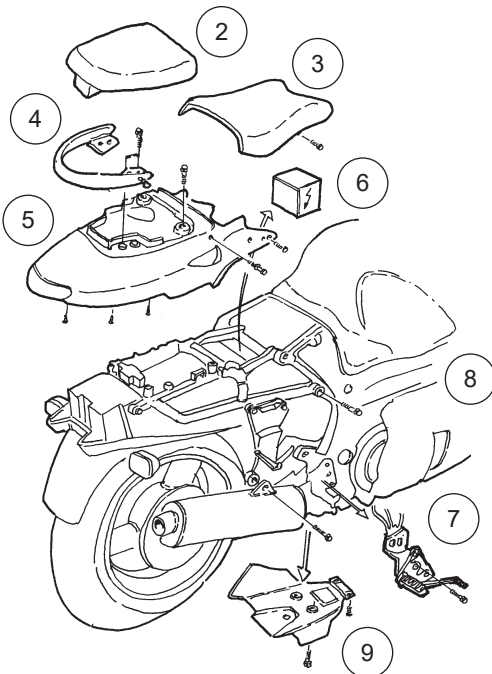
👁 Note!

Before you install this product clean the vehicle.

⚠ Warning!

When installing, consult your Vehicle Service Manual. There are differences between the model years which are not covered by this instruction.

Please note that the appearance of the motorcycles may vary between model years. The picture below is just an example.



1

Put the motorcycle on a work stand so that the rear wheel barely touches the ground.

2

Open the rear seat or cowl lock and remove the seat/cowl.

3

Loosen the two bolts holding the front seat, remove it.

4

If mounted, remove the passenger handle bar.

5

Loosen and remove the rear end cover.

6

Remove the battery. Remove the bolt and attachment holding the electrical wires if aluminum plate with electrical components, loosen bolts and loosen plate.

7

On model year up to 2021:

Loosen the right side foot rest bracket by removing the three bolts. Leave it hanging by the brake hose.

On model year 2022–:

Loosen rubber protection, located at rear fender, from rear frame.

8

Loosen the rear frame bolts. Remove the lower bolts and raise the rear frame as far up as possible.

On model year 2022–:

Secure rear frame and remove upper frame bolts. Note how cables etc. are mounted before removal.

👁 Note!

Make sure that the brake reservoir or electrical wires do not restrict raising the rear frame.

9

On model year up to 2021:

Loosen the lower cover plate under the swing.

MOUNTING INSTRUCTIONS

10

Loosen the triangle link from the rear swing attachment. Loosen the lower shock absorber bracket. Let the triangle link remain attached to the frame.

Alternatively:

Loosen the triangle link from the frame. Loosen the lower shock absorber bracket. Let the triangle link remain attached to the rear swing attachment.

11

Loosen the upper shock absorber attachment and remove it from the top and out to the left side of the motorcycle.

Note!

Before installing the Öhlins shock absorber clean the vehicle thoroughly.

12

Install the Öhlins shock absorber from the left side, first place the hydraulic preload adjuster through the frame on the right side. Place shock absorber down into the rear swing. First, install the upper bracket, then attach it to the triangle link. Fasten the triangle link to the pull rods. Do not tighten yet.

13

Install the hydraulic preload adjuster to the silencer bracket with the screw (01046-25) provided. Fasten the hose with the tie wraps provided.

Note!

Lower the motorcycle so that the shock absorber is slightly compressed, before tightening the screws.

14

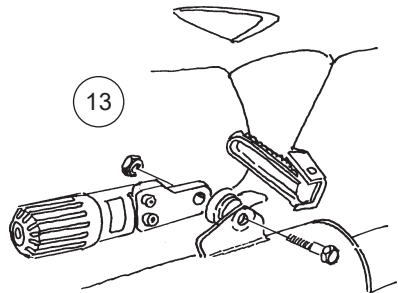
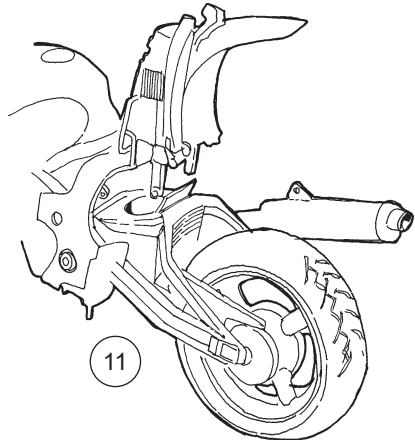
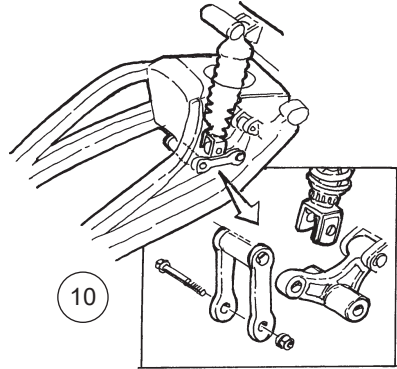
Tighten the upper and the lower attachments of the shock absorber and the upper pull link attachment.

15

Reinstall all removed parts to the motorcycle.

Note!

Make sure that nothing interferes with the hose and the adjuster when the rear wheel suspension is fully extended/compressed.



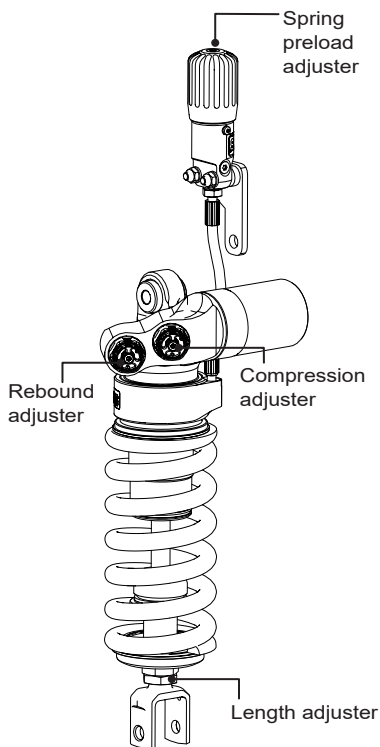
Warning!

Make sure that all screws are tightened to the correct torque and that nothing fouls or restricts movement of the shock absorber when the suspension is fully compressed or extended.

ADJUSTMENTS

⚠ Warning!

Before you ride/drive, always make sure that the setup is according to the recommended setup data. Read about adjustments and setting up in the Öhlins Owner's Manual before you make any adjustments. Contact an Öhlins dealer if you have any questions about setting up.



SETUP DATA

Length	330 ^{+4/-2}	mm
Stroke	65	mm
Rebound	13	clicks
Compression	12	clicks
Spring preload	15	mm
Spring	01095-54	
Spring rate	140	N/m
Spring, Free length	180	mm

Recommended free sag and ride height		
R1-R2	10	mm
R1-R3	25	mm
F1-F2	43	mm
F1-F3	50	mm

Öhlins products are subject to continuous improvement and development, therefore, although these instructions include the most up-to-date information available at the time of printing, minor updates may occur.

To find the latest information contact an Öhlins distributor. Please contact Öhlins if you have any questions regarding the contents in this document.

Part no. MI_SU026_3
Issued 2022-10-03

© Öhlins Racing AB. All rights reserved. Any reprinting or unauthorized use without the written permission of Öhlins Racing AB is prohibited.

Öhlins Racing AB
Box 722
S-194 27 Upplands Väsby, Sweden
Phone +46 8 590 025 00
fax +46 8 590 025 80



www.ohlins.com