

# GB USER INFORMATION SHEET

## OX345 CHAIN LASER

**WARNING:** Do not shine laser directly in eyes or at anything other than its intended use.

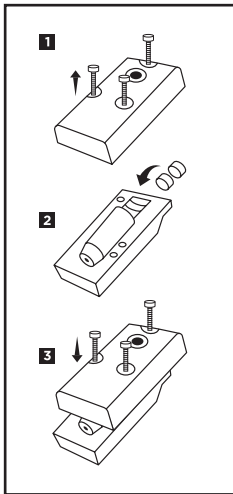
### HOW TO ASSEMBLE:

1. Remove screws from the top of the Chain Laser using hex key provided.
2. Ensure laser is pointing at the floor. Place the two batteries provided in the space behind the laser. Negative terminal of batteries to connect with laser spring.
3. Position head back onto body ensuring switch terminal fits behind both batteries. Screw the three screws back into head to secure in place.

### HOW TO USE:

1. Widen the arms on the Chain Laser outwards by twisting the adjuster to allow enough space to fit over your chain or belt.
2. Pass the Chain Laser over the chain/belt and adjust the arms inwards until they grip a flat part of the rear sprocket/pulley. Ensure the Chain Laser is gripping to clean, dirt free, flat parallel surfaces.
3. Point the laser down to the closest part of the chain / belt and turn on. The laser should appear in the centre of the chain link or belt. If not centralised initially, adjust positioning to centralise the laser.
4. Lift the laser head to point at the furthest visible point of the chain / belt towards the engine. Adjust the wheel alignment until the laser is showing at the centre point of the chain / belt. Your wheel will then be accurately aligned.

### HOW TO ASSEMBLE:



### HOW TO USE:

