

## What's in the box ?

- 1 PM01-10-040 - Rear hook (a)
- 1 PM01-05-042 - Front fixation (b)
- 1 PM01-05-041 - Middle fixation (c)
- 3 NE01-02-004 - TFHC 6x30mm screws
- 2 NE01-02-003 - TFHC 6x25mm screws
- 2 NE01-06-003 - TH 6x30mm screws
- 1 NE01-06-028 - TH 6x35mm screw
- 4 NE01-03-001 - M6 washers
- 4 NE01-04-003 - EM6F bolts
- 3 NE10-01-004 - Shouldered rings
- 1 NE04-01-341 - Sticker



The paper instructions may be limited, scan the QR code to watch the tutorial video online.

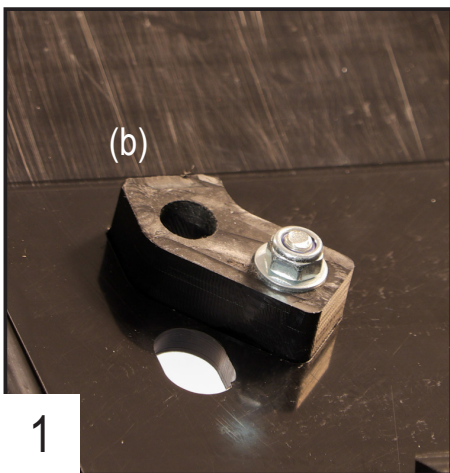
Approximate time of assembly: 15 minutes



Skid plates are made to protect the vital components of your bike and does not have a «life warranty». If you notice a defect on your skid plate at reception, please write to [contact@axpracing.com](mailto:contact@axpracing.com)

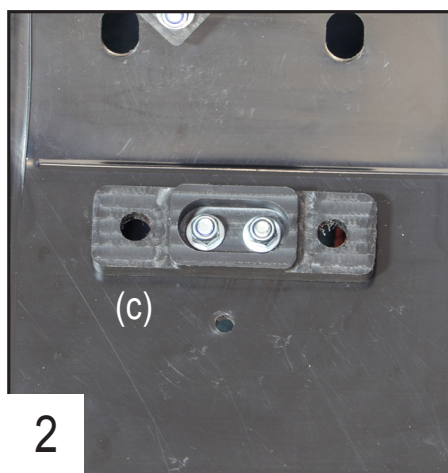
Off-road riding involves significant stresses and risks of impact on the motorcycle and its components. AXP Racing products are designed to improve protection and durability; however, they cannot be considered a foolproof guarantee against damage. AXP Racing accepts no liability for damage resulting from use, impact, or misuse.

## Follow the steps



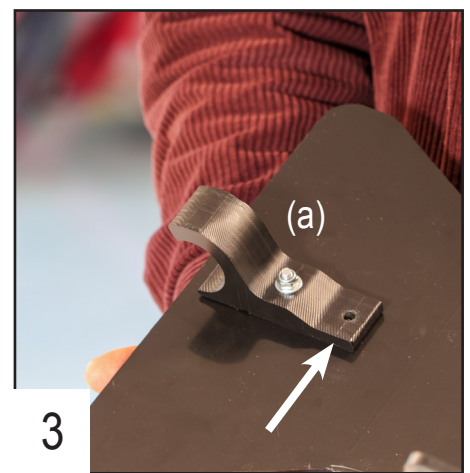
1 Place the front fixation in the machined part using a TFHC 6x30mm screw + M6 washer and bolt.

Placez la fixation avant dans la partie usinée avec une vis + rondelle et écrou.



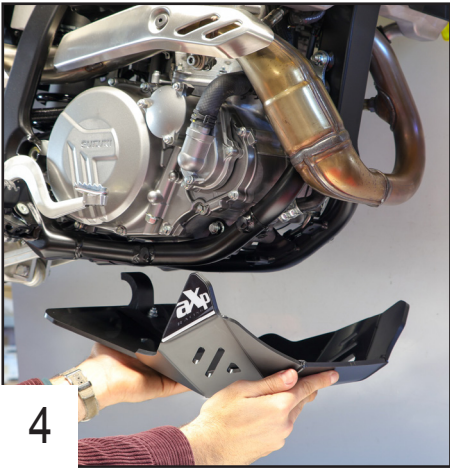
2 Place the middle fixation using 2 TFHC 6x25mm screws + M6 washers and bolts.

Placez la fixation centrale avec 2 vis + rondelles et écrous.



3 Place the rear hook using a TFHC 6x30mm screw + M6 washer and bolt. Make sure to align the other holes.

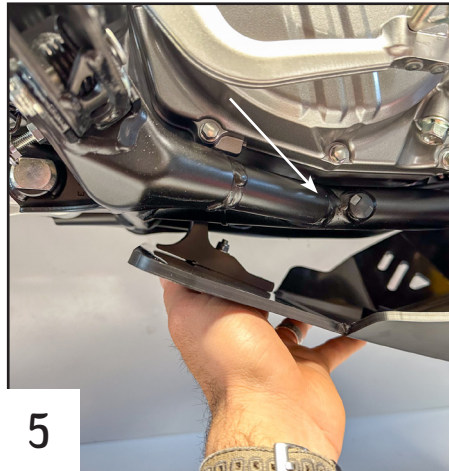
Placez le crochet arrière avec une vis + rondelle et écrou. Assurez-vous d'aligner les autres trous.



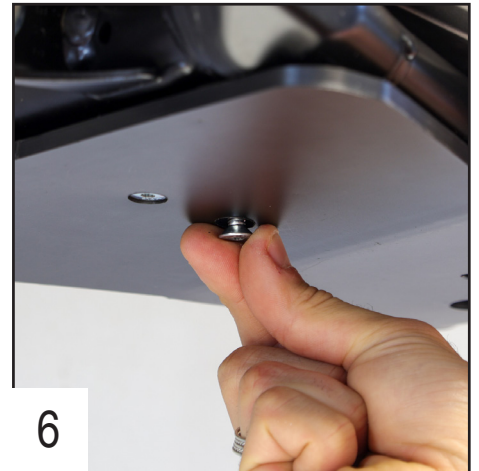
4

Place the skid plate under the bike and clip the rear hook on the frame's tube.

Placez le sabot sous la moto et clipsez le crochet sur le tube du cadre.



5



6

Use a TFHC 6x30mm screw in the rear fixation hole.

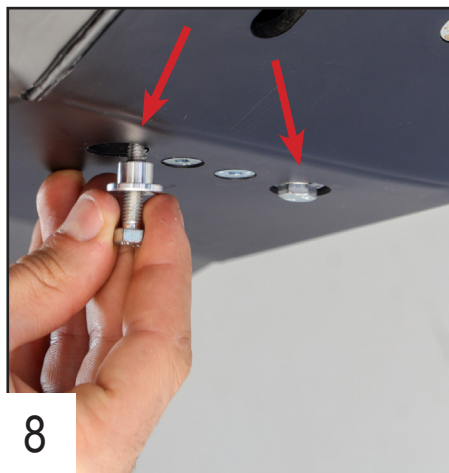
Utilisez une TFHC dans le trou de fixation arrière.



7

Use a TH 6x35mm screw + shouldered ring in the front hole.

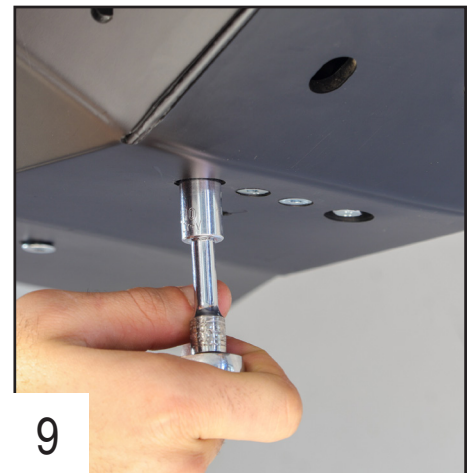
Utilisez une longue vis + une bague épaulée dans le trou de fixation à l'avant.



8

Place 2 TH 6x30mm screws + shouldered rings under the plate.

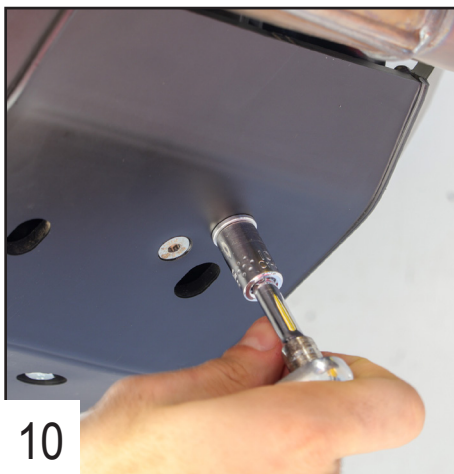
Placez 2 vis + bagues épaulées sous la moto.



9

Tighten the bottom screws.

Serrez les vis du dessous.



10

Tighten the front screw.  
Serrez la vis à l'avant.



11

Tighten the rear screw.  
Serrez la vis arrière.

**You're  
all ready  
to ride !**