


Item number: **LOC.00.760.10100**

Revision: **00** · Date: **05 - 2026**

Coding set for lock set

 ~ 1.5 h.

EASY  DIFFICULT


ENGLISH Thank you for choosing this premium product from SW-MOTECH. Visit our online shop for more information (e.g. model assignments). Required documents (e.g. national type approval) are available there for you to download.

Please read and understand all the instructions, safety information and warnings in these mounting instructions before mounting and using the product in order to avoid injury and damage. Keep these mounting instructions for reference.

This product was developed for vehicles in factory condition. Compatibility with original accessories or accessories from other manufacturers cannot be guaranteed.

These mounting instructions have been prepared to the best of our current knowledge. No legal claims relating to accuracy can be made. Errors and omissions excepted. We reserve the right to make technical and design changes. The copyright is held by SW-MOTECH.

SAFETY WARNING SYMBOL

 This warning symbol is used in these mounting instructions to warn of deadly dangers, injuries or other hazards. The words **DANGER**, **WARNING** or **CAUTION** are used as part of this warning symbol to convey important safety messages and information relating to the installation and use of this product. These words, together with the safety warning symbol, mean:

 **DANGER:** Indicates a hazardous situation which, if not avoided, will result in death or serious injury!

 **WARNING:** Indicates a hazardous situation which, if not avoided, may result in death or serious injury!

 **CAUTION:** Indicates a hazardous situation which, if not avoided, may result in minor or moderate injury!

 **NOTE:** Important information, but not relating to a risk of death or injury (property damage only)!

GENERAL INFORMATION


 **WARNING:** Assembly and/or maintenance of this product requires advanced technical skill, appropriate tools, and a good understanding of tool usage and torque specifications. For your own safety, SW-MOTECH recommends having the assembly and/or maintenance carried out by a qualified and certified motorcycle workshop.


 **WARNING:** If you do choose to assemble this product yourself, carefully and fully read the mounting instructions before assembly and use, and follow all instructions to avoid serious injury or death. Also observe all relevant information in the vehicle manual when mounting or using the product. IF YOU DO NOT UNDERSTAND ANY PART OF THESE MOUNTING INSTRUCTIONS OR NEED AN EXPLANATION AS TO A SPECIFIC INSTRUCTION, DO NOT ATTEMPT TO INSTALL THIS PRODUCT WITHOUT CONSULTING SW-MOTECH FOR ASSISTANCE!

PREPARATION: Read the mounting instructions carefully and make sure that all parts on the parts list are available.

 **CAUTION:** Ensure that your vehicle is standing securely. Switch off the engine and remove the ignition key. Allow the engine/exhaust to cool down if necessary. Disconnect the battery when working on the electrical system. Only use proper tools and always wear safety goggles and gloves during assembly and maintenance. Have a second person help you with assembly and maintenance.

ASSEMBLY: All parts and connections removed from the vehicle must be reinstalled according to the vehicle manufacturer's specifications or replaced with parts and hardware supplied by SW-MOTECH.

 **WARNING:** Secure all threads with a medium-strength liquid threadlocker, unless otherwise specified.

 **DANGER:** Tightening torques not defined by SW-MOTECH must be obtained from the vehicle manufacturer or a certified motorbike workshop.

FUNCTIONAL CHECK: After mounting the product, ensure that no moving parts are obstructed and that the function of the vehicle is not impeded. Cables and hoses must not rub against each other and/or be hindered in any way.

 **WARNING:** Carry out a comprehensive functionality check before you start to drive. Check the tightening torque of all connections and the tight fit of the product after the first 50 km and then at regular intervals. Mounted accessories can change the handling and stability of the vehicle.



SW-MOTECH GmbH & Co. KG
Ernteweg 7-10
35282 Rauschenberg
Germany



info@sw-motech.com
www.sw-motech.com



Take note of the symbols and what they mean in the ASSEMBLY section. If the term OEM appears in the ASSEMBLY section, the vehicle manufacturer's specifications must be observed and applied.



If you have any questions, please don't hesitate to contact our Customer Service team or our distributors. You can find our telephone number and a list of our distributors in our online shop:

www.sw-motech.com


PARTS LIST - READ AND KEEP MOUNTING INSTRUCTIONS!

3

1



LOC.00.760.002.01

 **8/8**

2



LOC.00.760.003.01

 **8/8**


3




LOC.00.760.004.01

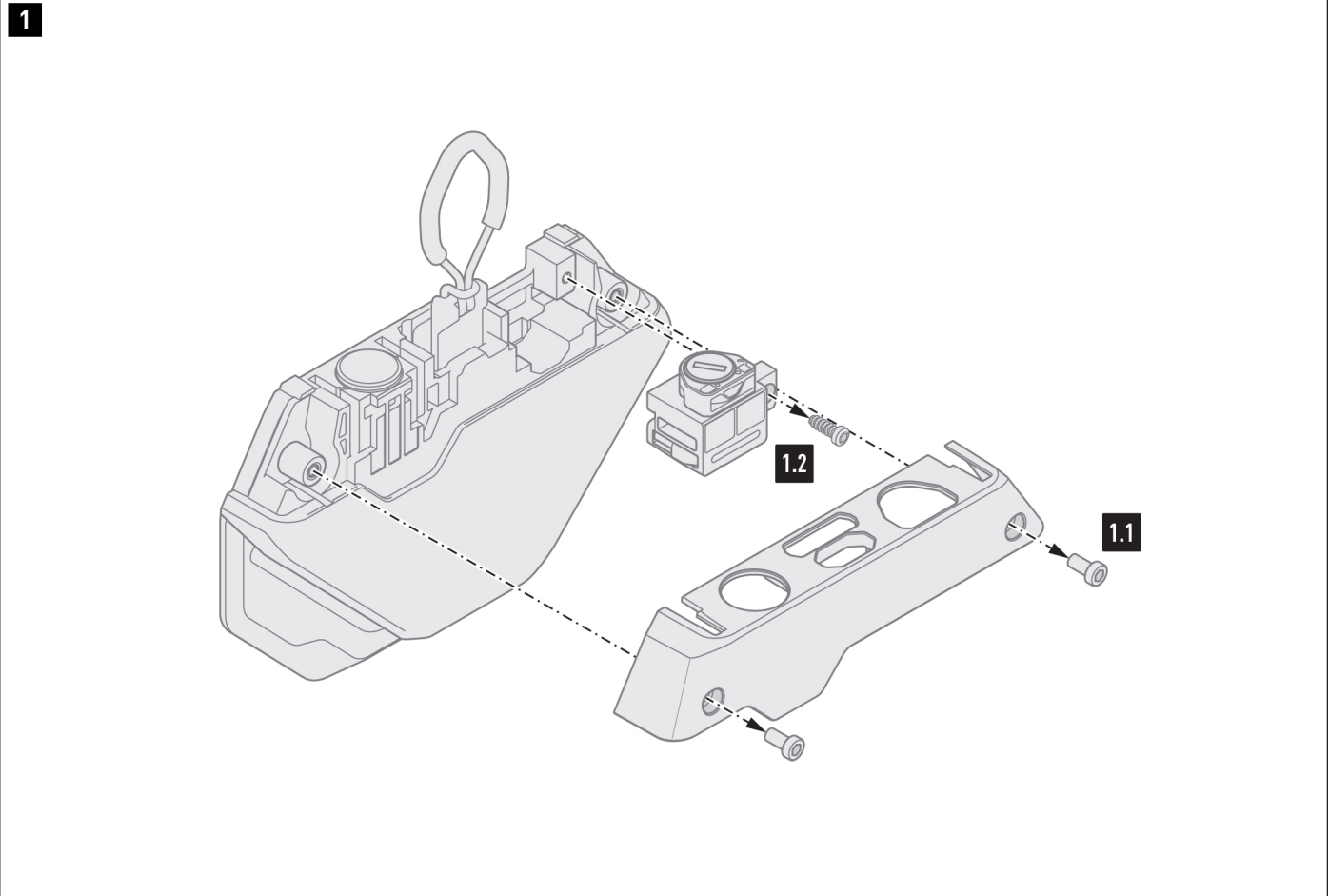
 **8/8**

4



LOC.00.760.009.00

 **10/10**



▲ WARNING: Always wear eye and hand protection!
▲ WARNING: Always use suitable tools!

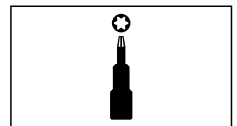
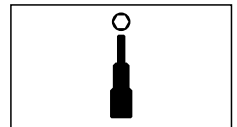
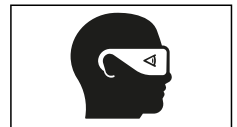
Preparation

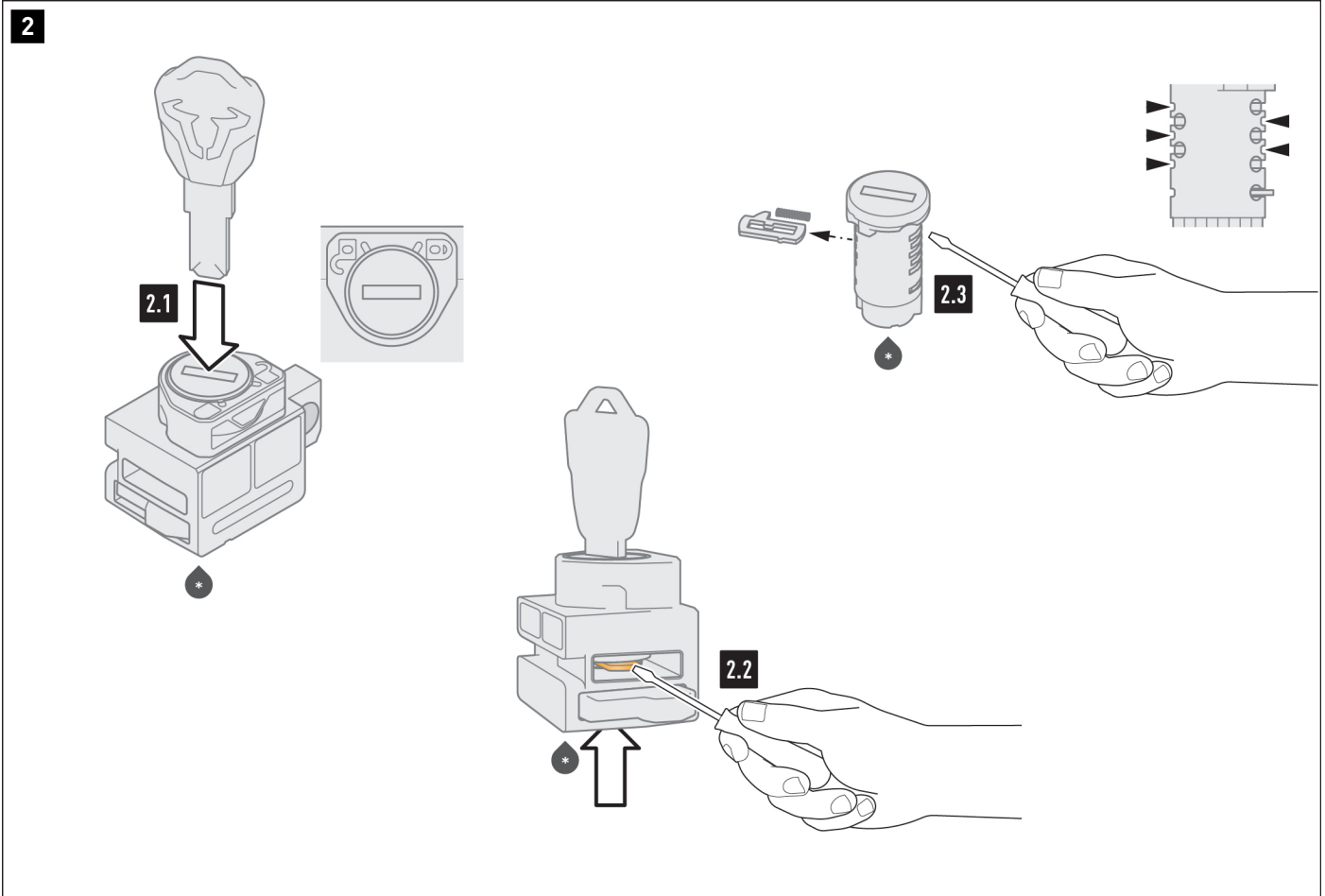
Since this product consists of very small and delicate parts, the following steps must be performed in a clean, well-lit environment. Follow all steps carefully to prevent injuries and damage.

Dismantling the installed locking unit

1.1 - Loosen the two screws and remove the cover of the V-LOC connector.

1.2 - Loosen the screw and remove the lock housing from the V-LOC connector.





Dismantling the lock cylinder

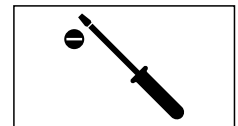
2.1 - Place the lock housing (-) on a clean surface. Insert the key into the lock cylinder (-). Now turn the lock cylinder to the neutral position.

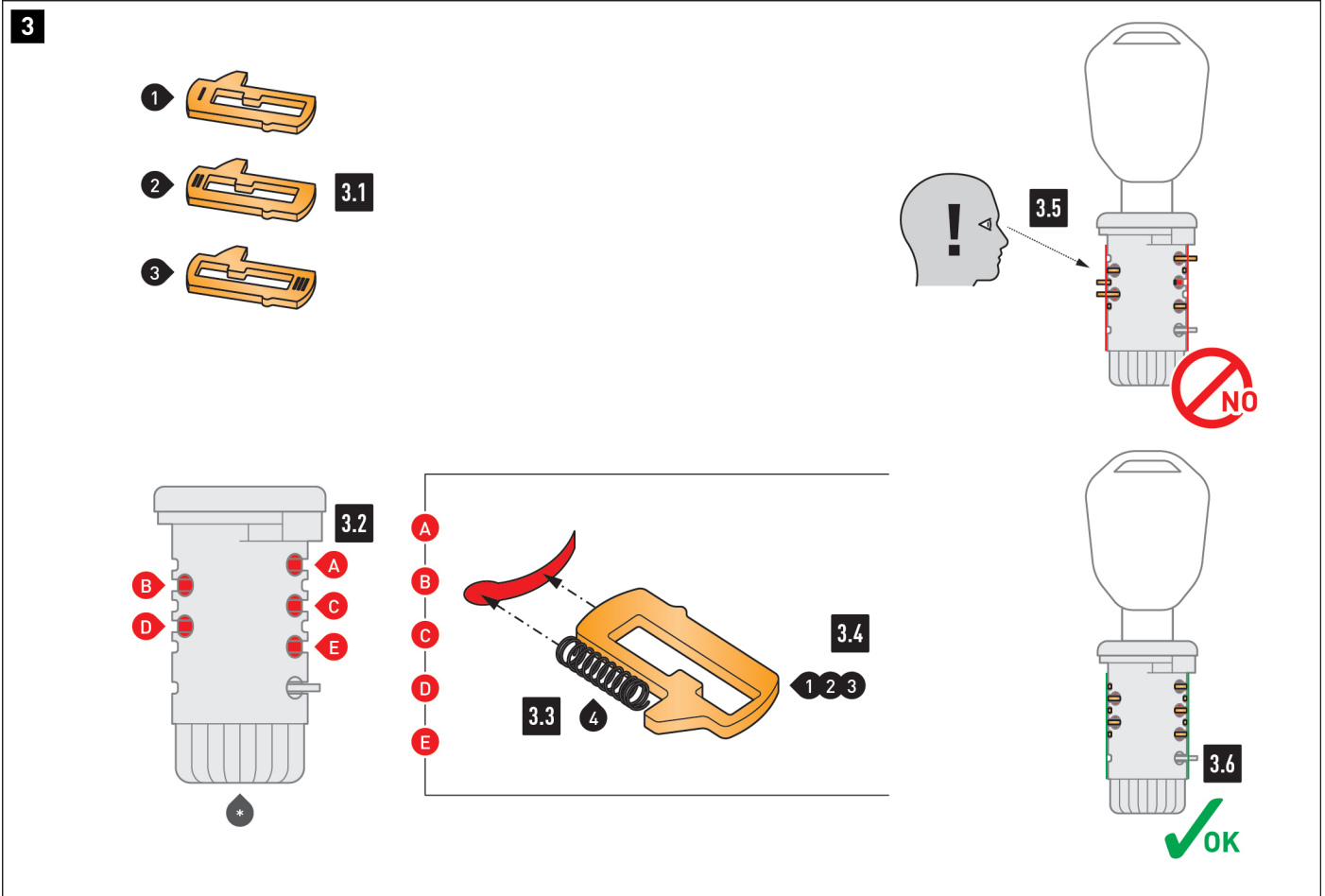
2.2 - Using a small flathead screwdriver, press the locking plate into the lock cylinder; at the same time, push the lock cylinder out of the lock housing from below. Remove the key from the lock cylinder.

Dismantling the original locking plates

2.3 - Using a small flathead screwdriver, push the five original locking plates out of the lock cylinder from their respective back sides (the narrow openings).

TIP: Note the order and position of the original locking plates if you wish to restore the original condition. Please retain the original locking plates, springs and keys.





Setting a code for the lock cylinder

3.1 - Open the packaging and arrange locking plates (1), (2) and (3) according to their engraved numerals (I, II or III). Make sure not to lose any small parts.

3.2 - In order to use the lock cylinder with your ignition key, locking plates (1), (2) and (3) must now be installed in a specific order. Start with the wide **Slot (A)** at the top of the lock cylinder.

⚠ NOTE: During installation ensure that the lock cylinder is held in an upright position to prevent locking plates (1), (2) and (3) from falling out. Note the sequence and position of locking plates (1), (2) and (3) for your personal record.

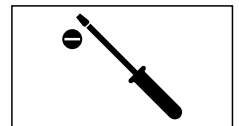
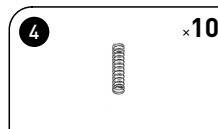
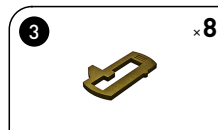
3.3 - Insert the spring (4) into the marked groove.

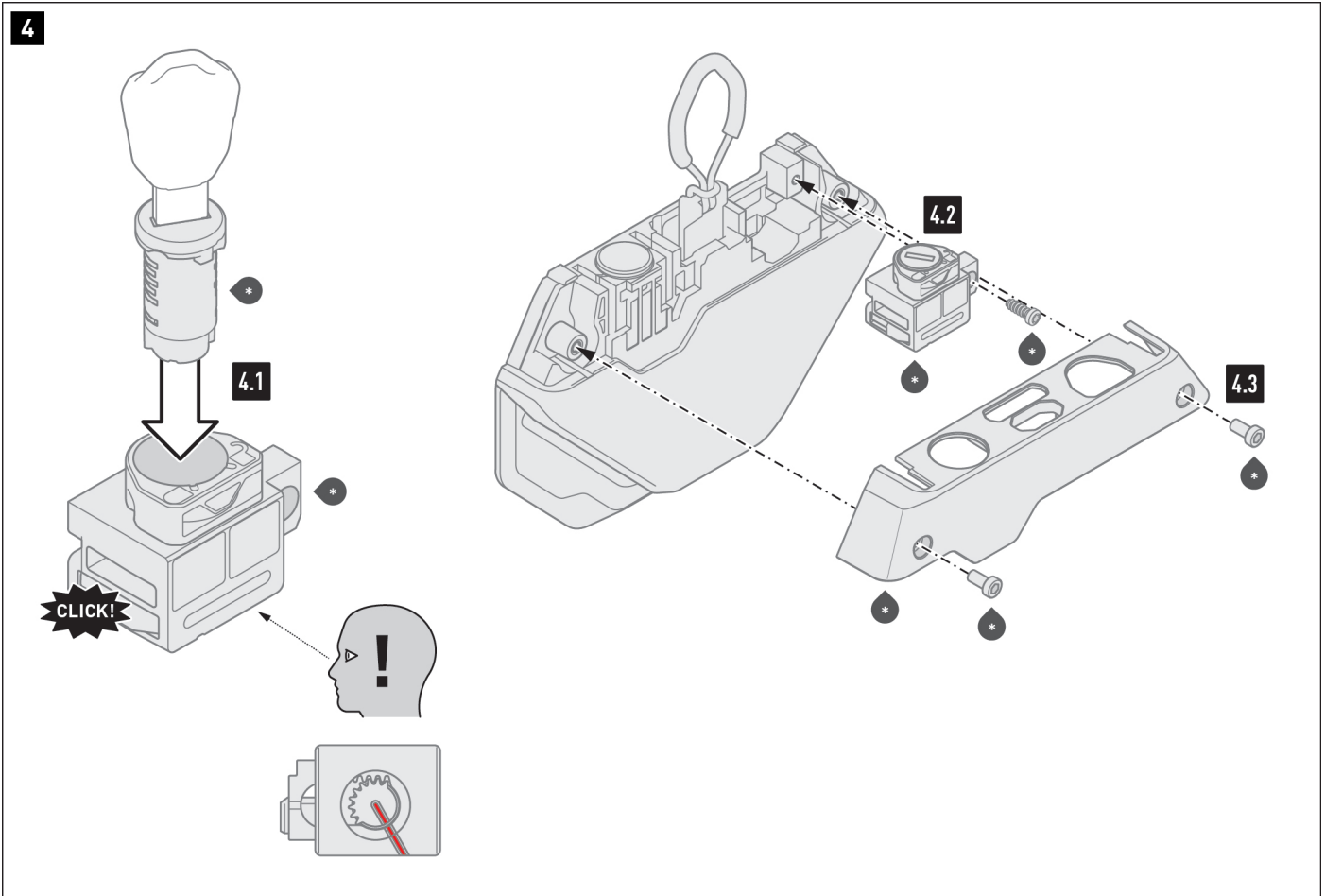
3.4 - Now carefully press the locking plate (1) (engraving I) into **Slot (A)**.

3.5 - Insert the ignition key fully into the lock cylinder. If the locking plate (1) is compatible with the profile of your ignition key, it will be flush with the lock cylinder housing on both sides.

If the locking plate (1) protrudes on one side, carefully remove it from the lock cylinder using a small flathead screwdriver and insert locking plates (2) and then (3) until you find one that is flush with the lock cylinder housing. Now perform **steps 3.3 to 3.5** on the remaining **four slots, (B) to (E)** (two or three on one side). During assembly, always ensure that none of the already installed locking plates are able to fall out.

3.6 - Once you have completed the coding process, insert the ignition key into the lock cylinder. Check once again that the installed locking plates are flush with the lock cylinder housing.





Mounting the lock cylinder

4.1 - Before inserting the lock cylinder, make a note of the alignment of the recesses on the underside of the lock housing and bolt. Carefully insert the lock cylinder WITH the ignition key into the lock housing, aligning it with the recess. Listen for the clicking sound of the lock cylinder.

Mounting the locking unit

4.2 - Using the screw (-), screw the lock housing (-) to the V-LOC connector. Carefully tighten the screw (-) by hand.

⚠ WARNING: Over-tightening the screw may damage plastic components!

4.3 - Screw on the cover of the V-LOC connector.

⚠ WARNING: Use liquid threadlocker!

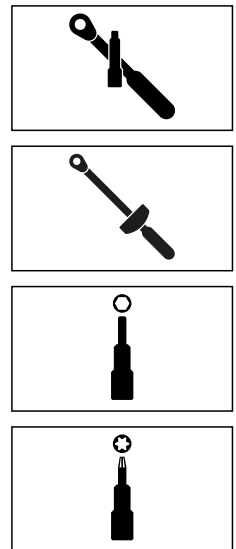
Tighten the screws (-) as follows: **2 Nm**.

⚠ WARNING: Over-tightening the screw may damage plastic components!

Finally, check all functions of the lock to ensure proper operation.

Maintaining the lock cylinder

Use only graphite powder as a lubricant!



PRODUCT-SPECIFIC NOTES

⚠ NOTE :Observe the country-specific regulations for the registration/operation of your vehicle and any applicable TÜV regulations. Have any parts requiring registration entered into your vehicle documents by your inspection centre after they have been installed.